



shaping tomorrow with you

FUJITSU Manufacturing Industry Solution FJVPS Assembly Process Viewer For iOS

- Operation Guide -

The 4th Edition
Sep. 2016

Microsoft, Windows, Microsoft Office, Internet Explorer, Windows Media, Visio, Excel, PowerPoint, and IntelliMouse are registered trademarks or trademarks of Microsoft Corporation in the United States and other countries.

Apple, the Apple logo, iPhone, iPad, and iTunes are trademarks of Apple Inc., registered in the United States and other countries. App Store is a service mark of Apple Inc.

Other company and product names mentioned in this document are trademarks or registered trademarks of their respective companies.

1. Product Requirements

1-1. System Configuration [... P4](#)

1-2. Operation Examples [... P5](#)

2. Prior Arrangement for Application Utilization [P7](#)

- “iTunes” Installation
- Creation of Data for Viewing with the Dedicated Command
- Storage of Data for Viewing
- Additional Registration of “MIME Types” with IIS Manager

3. Registration of Data for Viewing with iPad/iPhone via iTunes [P9](#)

4. Functional Overview and Operating Instructions

4-1. Application Startup [... P13](#)

4-2. Start Screen [... P14](#)

Static Image/Video/3D Model Load [... P15](#)

4-3. New Data Load [... P16](#)

4-4. Reload and Registered Data Load [... P17](#)

4-5. Data Details Viewing [... P18](#)

4-6. Load History/Registration List Edit [... P19](#)

4-7. Switching Display Window Format [... P20](#)

4-8. Static Image Viewing [... P21](#)

4-9. Animation Play [... P22](#)

4-10. 3D Data Viewing [... P23](#)

5. Settings Screen

5-1. Settings Screen [... P25](#)

5-2. Application Version Check [... P25](#)

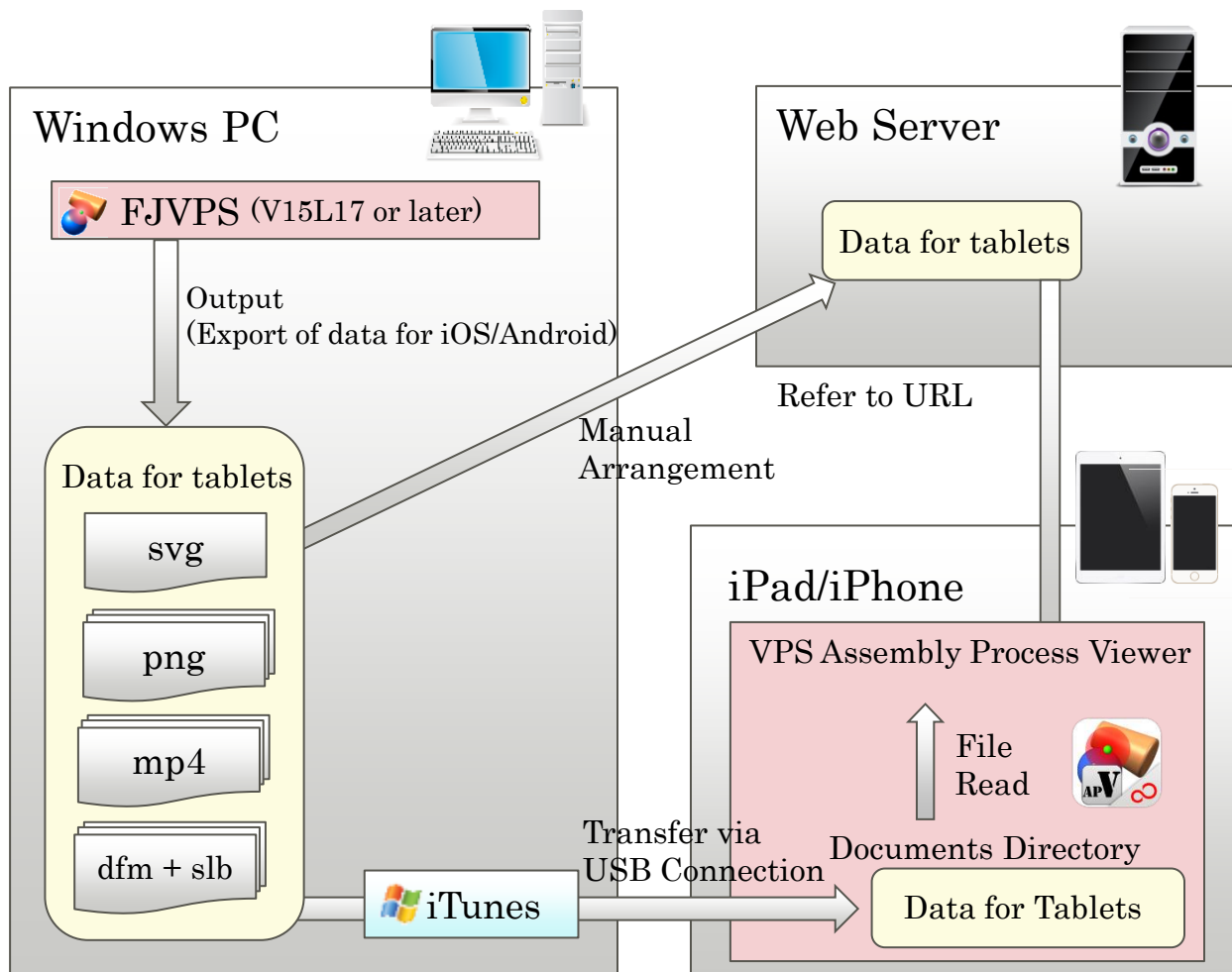
6. Display Language [P27](#)

- Japanese Menu and English Menu

1. Product Requirements

1-1. System Configuration

■ System Configuration Diagram

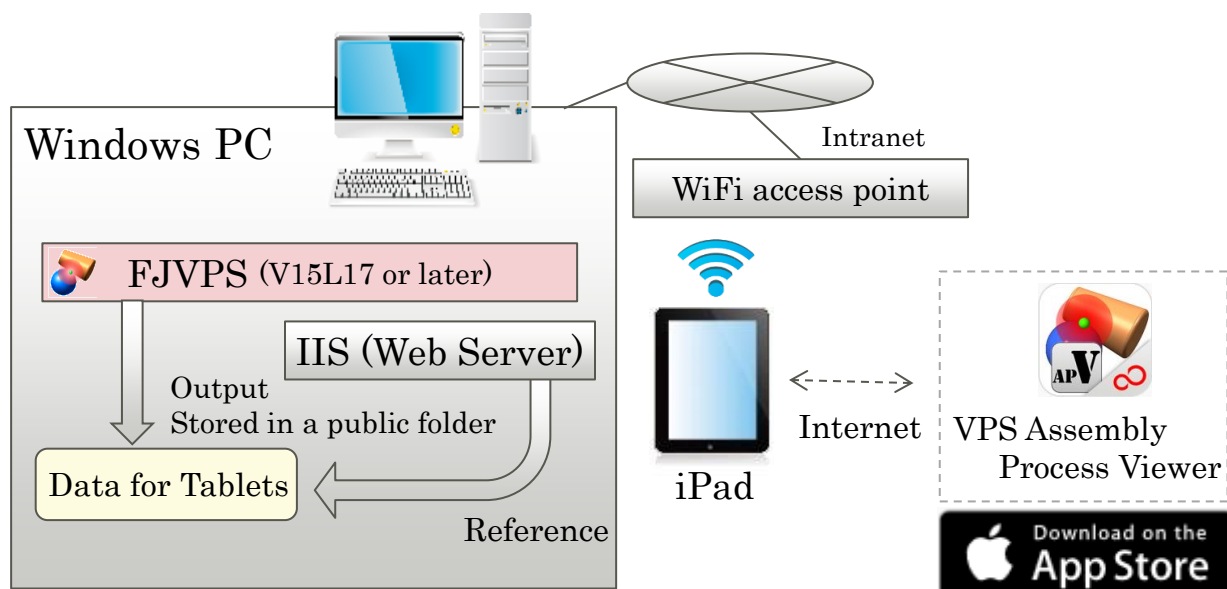


■ System requirements

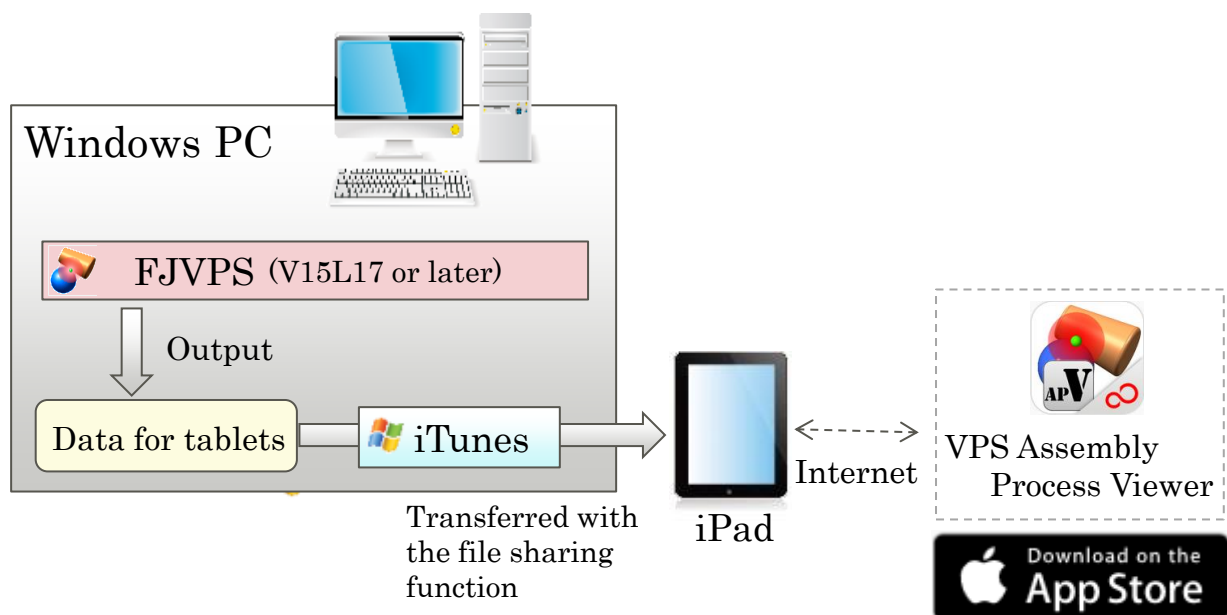
- iPad/iPhone
 - : iOS8.1 or later
- Application for data viewing (FJVPS Assembly Process Viewer)
 - : Application for data viewing
 - : Downloadable from App Store
- iTunes
 - : Required for data viewing outside the network environment
- FJVPS (V15L17 or later)
 - : Required along with one of the following modules for dedicated data creation
 - (1) FJVPS Manufacturing
 - (2) FJVPS Assembling Animation (with Document Interface OP)
- IIS (Web Server)
- Wi-Fi Access Point

1-2. Operation Examples

■ Operation example (1) : internal network



■ Operation example (2) : no network



2. Prior Arrangements for Application Utilization

2. Prior Arrangement for Application Use **FUJITSU**

Carry out the following preparations for using this application.

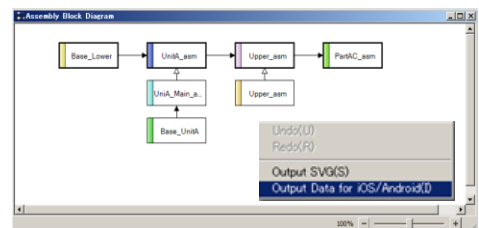
1. “iTunes” installation on a PC (* If necessary)

By storing models in the iPad/iPhone unit via iTunes, the data can be viewed outside the network environment.
For how to store data via iTunes, refer to pages 8 to 11.

* This preparation is necessary only if data should be viewable in an environment where a Wi-Fi/wireless LAN environment cannot be configured or where Wi-Fi is unavailable.

2. Creation of data for viewing

Create data for viewing with this Viewer with the dedicated command. Use the “Output Data for iOS” command provided by the V15L17 or later “FJVPS Manufacturing” or “Assembling Animation” (* with theform option) module.
For details, refer to the manual of each module.



3. Storage of data for viewing

Store the data for viewing created in step “2” in a virtual directory accessible in the Wi-Fi/wireless LAN environment using IIS.
As security settings for the virtual directory, create groups/users such as “Everyone” and “Users” requiring no access restriction and grant “read-only” access permissions.

4. Additional registration of “MIME Types” with IIS manager

Add “.dfm” and “.slb” as accessible extensions.

If “.mp4,” “.svg,” and “.png” are unregistered, also register these.

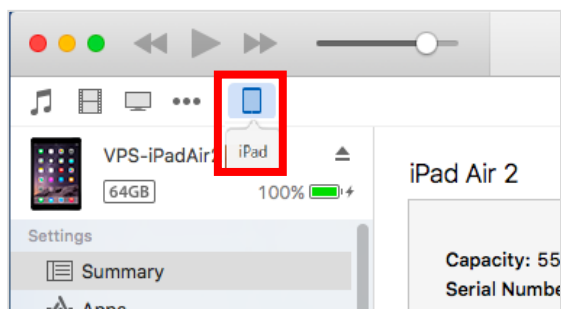
3. Registration of Data for Viewing with iPad/iPhone via iTunes

3. Data Registration via iTunes (1/3) **FUJITSU**

Store data for viewing in iPad/iPhone as follows.

1. Download “VPS AP Viewer” from “App Store” and install it in your iPad/iPhone unit.
2. Start iTunes on a PC.
3. Connect the iPad/iPhone unit of (1) to the PC of “2.”

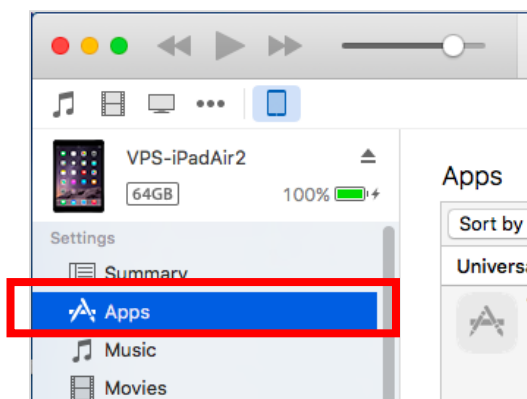
The connected unit’s device name is displayed in the upper part of the menu.



4. Select the connected unit.

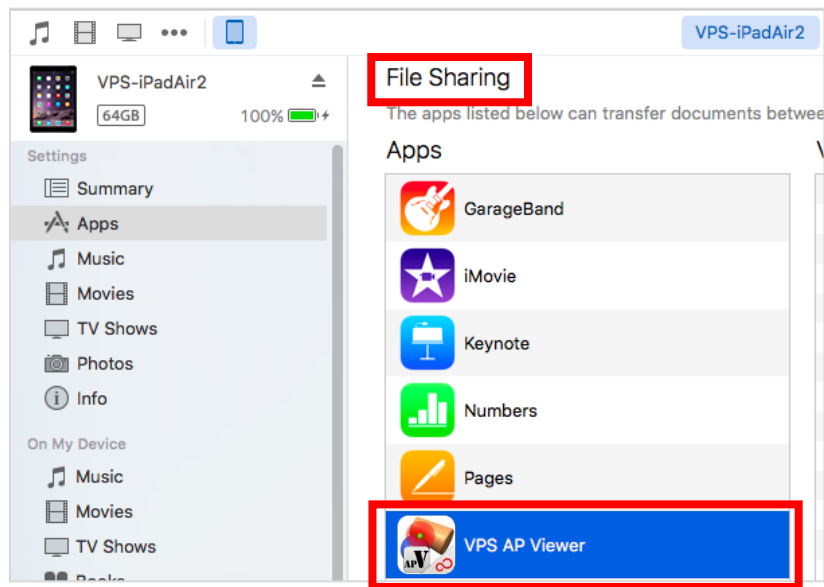
The display content will be changed to the connected unit information.

5. Select “Settings” – “Apps.”



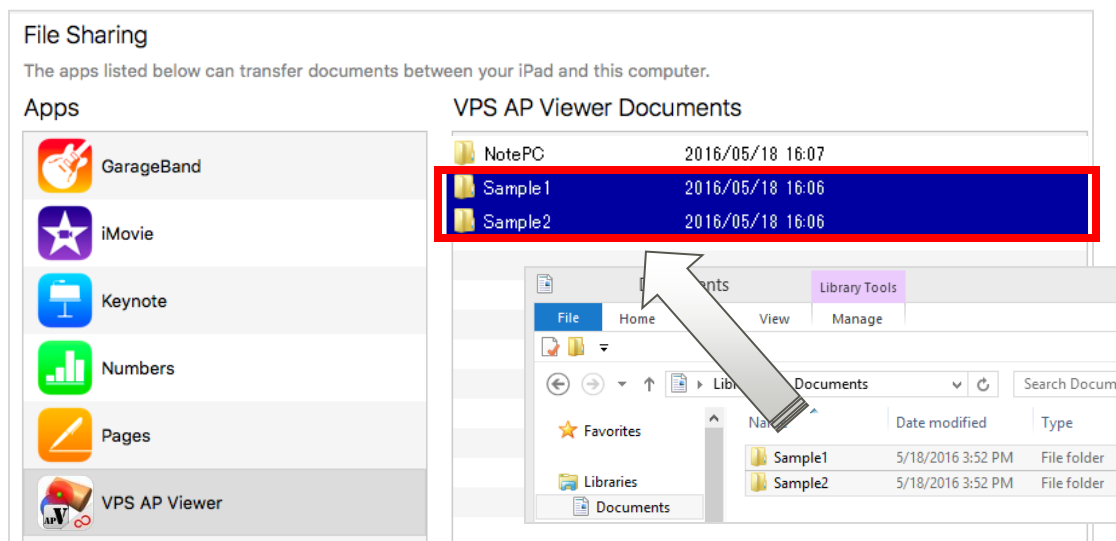
3. Data Registration via iTunes (2/3) FUJITSU

6. Select “VPS AP Viewer” under “File Sharing.”



7. Save data for viewing in the “VPS AP Viewer Documents” column.

Drag and drop a set of files created with the “Output Data for iOS” command including SVG from “Add” or Explorer into the documentfolder to store the data.

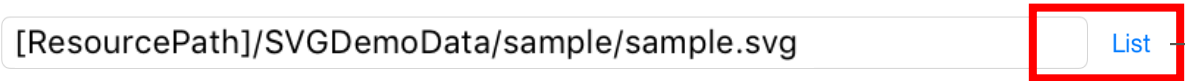


Additional data is transferred to the iPad/iPhone unit.



3. Data Registration via iTunes (3/3) FUJITSU

8. Confirm that data registration is done correctly.

Start “VPS AP Viewer” on the iPad/iPhone unit and press the “URL List” button in the upper right part.



The additional data is shown at the top of the “URL List.”

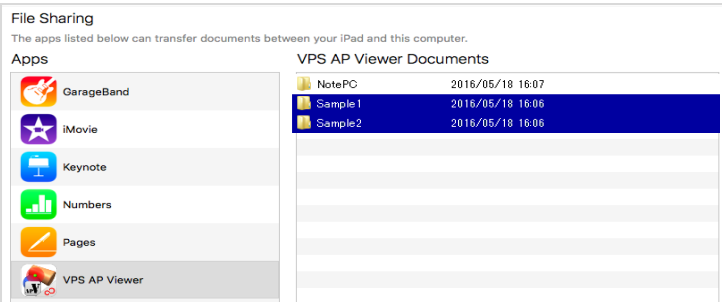
URL List	
mouse [DocumentsPath]/data3/mouse.svg	 >
[Sample]sample [ResourcePath]/SVGDemoData/sample/sample.svg	 >

- * If addition is done while the application is running, execute “Reload” provided in the lower part of the URL list.
- * If data is stored by folder, SVG files within the folders are shown in the URL list instead of the folder names.

[Reference]

Registration Deletion from the Unit via iTunes

- (1) Perform steps “2” on page 9 to “6” on page 9.
- (2) Select the data to be deleted from “VPS AP Viewer Documents.”



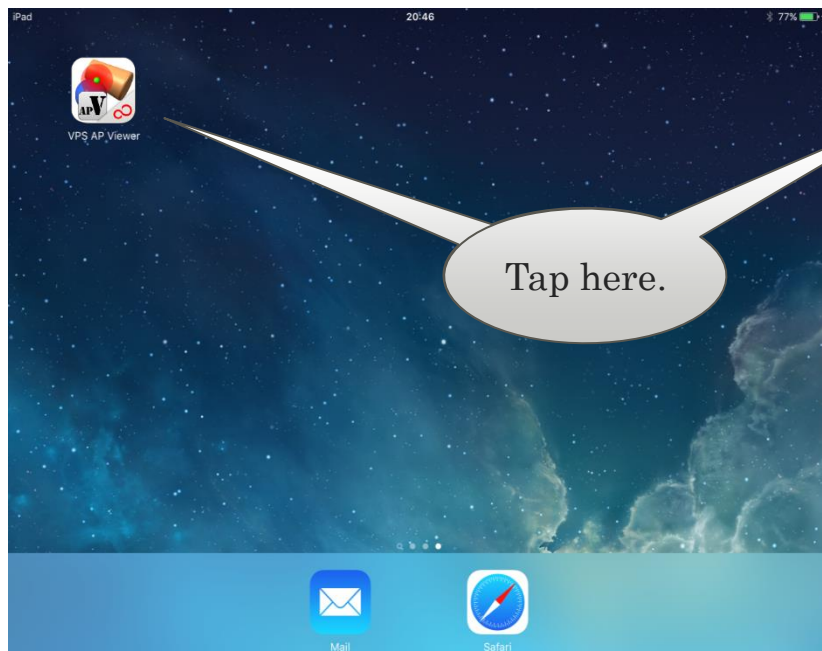
- (3) Press the “Delete” key on the PC to complete the deletion.

4. Functional Overview and Operating Instructions

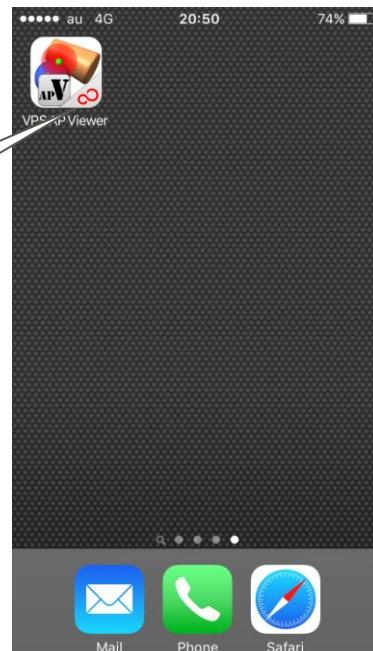
4-1. Application Startup

Tap the “VPS AP Viewer” icon on the desktop to start the “FJVPS Assembly Process Viewer” application.

[Screen]



[iPad]



[iPhone]

4-2. Start Screen (1/2)



When this application is started, the screen for an “assemblyblock diagram” created in FJVPS is displayed. From this screen, load various data.

[Screen]

両面印字Base_U

IN_PUNI

両面印字BP

両面_upper_U

side_P

Upper_P

Upper_roller

UNIT_ALL

L_Unit

R_unit

搬送B

New data load

Specify the SVG name here to newly load data.

Assembly block diagram display area

This area shows an assembly block diagram.
Tap a cell in the lower block to view static image/movie/3D data.

Reload/Registered data load

Open a list of data previously loaded or registered via iTunes, and from this list, select and load data to be viewed.

Reload

Reload the latest version of loaded data to refresh the display. Use this to update data without restarting the Viewer when engineering changes and others occur in loaded data and the DB is updated.

Switching display window format

Switch the format of the static image/video/3D model display window.
“Pop-up” and “overlap” are the two formats supported. Tap this part to switch the format.

Overlap

Reload

Reload the latest version of loaded data to refresh the display. Use this to update data without restarting the Viewer when engineering changes and others occur in loaded data and the DB is updated.

Switching display window format

Switch the format of the static image/video/3D model display window.
“Pop-up” and “overlap” are the two formats supported. Tap this part to switch the format.

Reload/Registered data load

Open a list of data previously loaded or registered via iTunes, and from this list, select and load data to be viewed.

Switching display window format

Switch the format of the static image/video/3D model display window.
“Pop-up” and “overlap” are the two formats supported. Tap this part to switch the format.

Reload

Reload the latest version of loaded data to refresh the display. Use this to update data without restarting the Viewer when engineering changes and others occur in loaded data and the DB is updated.

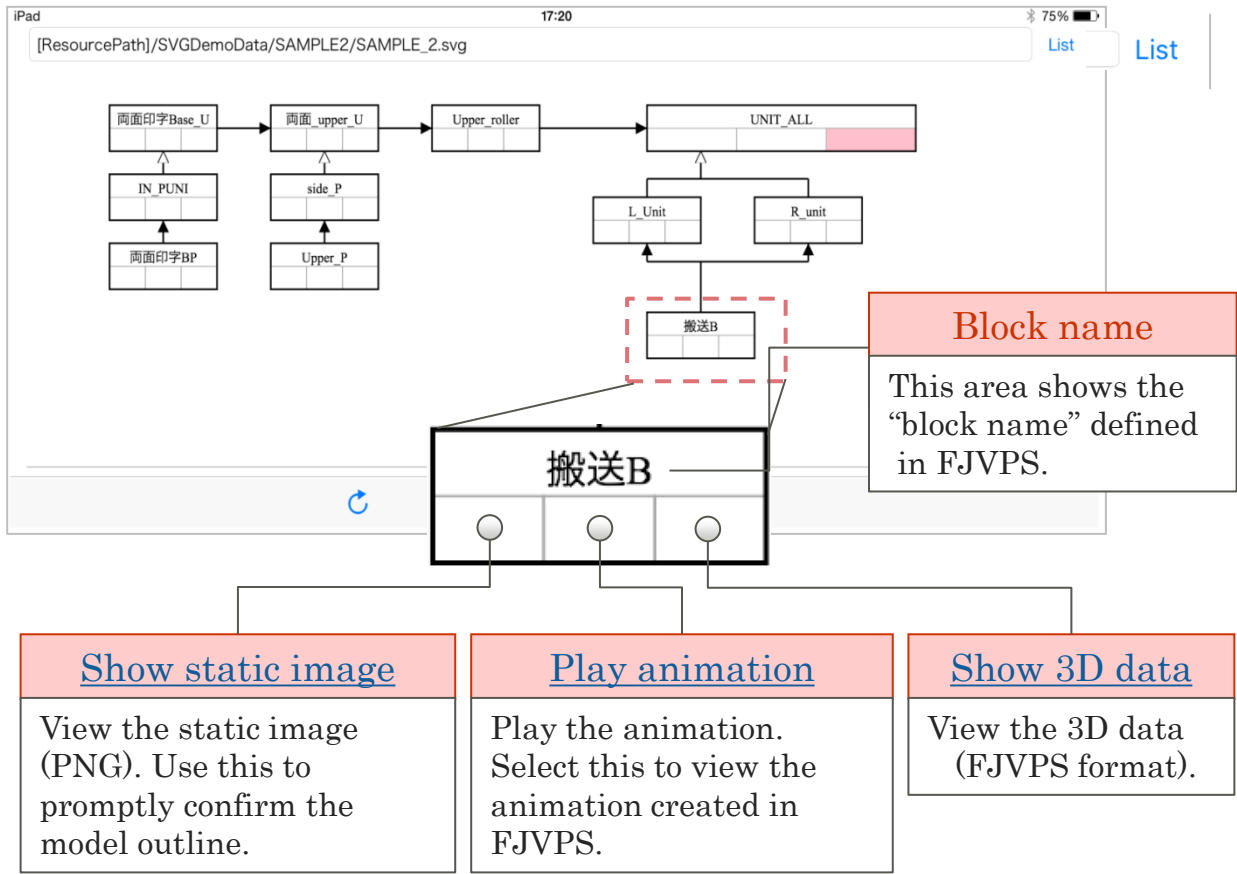
Switching display window format

Switch the format of the static image/video/3D model display window.
“Pop-up” and “overlap” are the two formats supported. Tap this part to switch the format.

4-2. Start Screen (2/2)

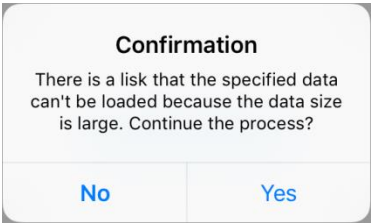
Tap a cell in a block on the “assembly block diagram” to load data. The tap position determines the type of loaded data.

[Screen]



[Specifications/Cautions]

- As to “3D data viewing,” if the model size is larger, time may be required to complete the load.
- IN “3D data viewing,” the following message is displayed when the model you try to load is large. Please try re-loading after reducing the data size.



4-3. New Data Load

Specify SVG data stored in the DB the Wi-Fi/wireless LAN environment in the URL input field to load the data newly for viewing.

[Screen]

[List](#)

[Specifications/Cautions]

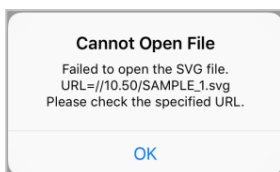
- The supported file extension is “.svg” only.
- Prohibited characters include:

“ : / ? # [] @ ! \$ & ‘ () * + , ; ”

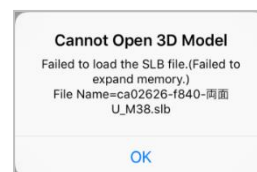
- An error message is displayed if input information is incorrect. Check the file storage destination and name again and enter correct information.

(Examples)

If the storage destination or file name is incorrect



If the part file of a component is missing at 3D data load



[Reference] About Specific Folder Names

The following two locations are for data storage prepared by the system. These cannot be modified.

1. **DocumentsPath**

-> The storage location for data saved via iTunes
E.g., [DocumentsPath]/Unit2/mouse.svg

2. **ResourcePath/SVGDemoData**

-> The storage location for standard samples of this Viewer
E.g., [ResourcePath]/SVGDemoData/SAMPLE1/SAMPLE_1.svg

4-4. Reload and Registered Data Load FUJITSU

Select, and load, data from the “URL List” that provides a list of data previously loaded or registered via iTunes.

[Screen]

Unit2
http:// XXXXXXXXXX 1/iOS/Unit2/Unit2.svg

mouse
[DocumentsPath]/data3/mouse.svg

[Sample]sample
[ResourcePath]/SVGDemoData/sample/sample.svg

Load data

Tap the row or the rightmost “>” mark of a file to be loaded.

Data details

Tap the relevant mark “i” to confirm the detailed file information of that row.

Back

Reload (Refresh)

Edit

Back

Go back to the “Start Screen.”

Reload (Refresh)

Refresh this page.
Use this to add data saved via iTunes to this list without starting this application.

Edit

Open the window for changing the display order of the history or deleting history information.

[Specifications/Cautions]

- Data loaded or stored via iTunes is added to the top part by file storage.
- Up to “100” items are shown in the URL list. If this maximum number is exceeded, older items are deleted. However, file information saved via iTunes is not deleted.

4-5. Data Details Viewing

FUJITSU

View the details of data of the row selected from the “URL List.” The registration name shown in the URL list can also be modified.

[Screen]

iPad19:1878%

< URL List

URL Details

Registration Name

mouse

URL

[http:// XXX.XXX.XX.XXX /iOS/mouse.svg

Final Reference Date

April 20, 2016 at 08:24:15 GMT+9

URL List

Go back to the “URL List” page.

URL details

This area shows the path (URL) to the specified data.

Last access date

This area shows the date on which the relevant date was accessed.

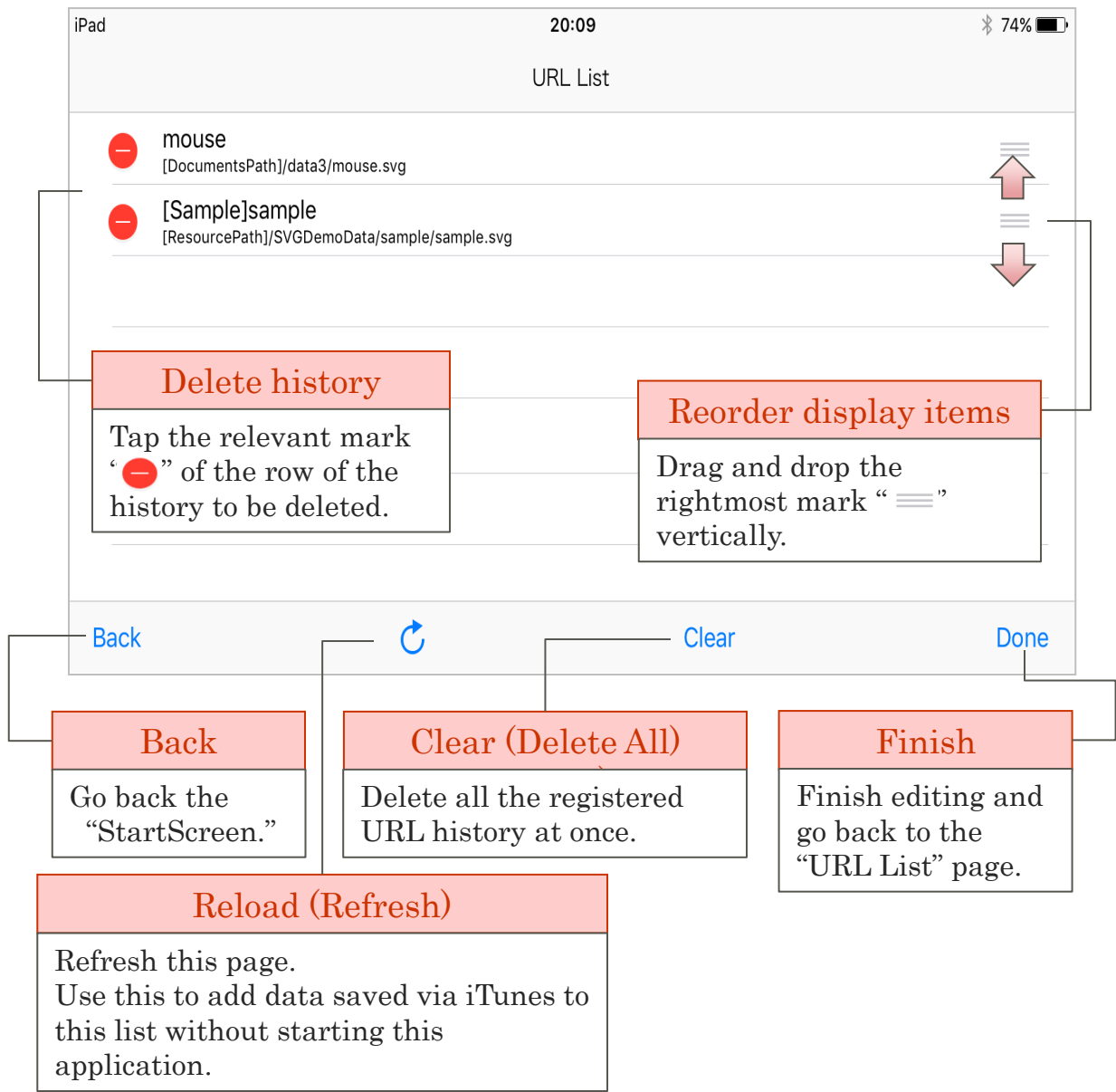
Title shown in URL List

Confirm. and if necessary, edit the title shown in the URL list.
The “SVG name” is the default value.

4-6. Load History/Registration List Edit FUJITSU

Reorder items shown in the data load history/registration list and delete history no longer necessary.

[Screen]



[Specifications/Cautions]

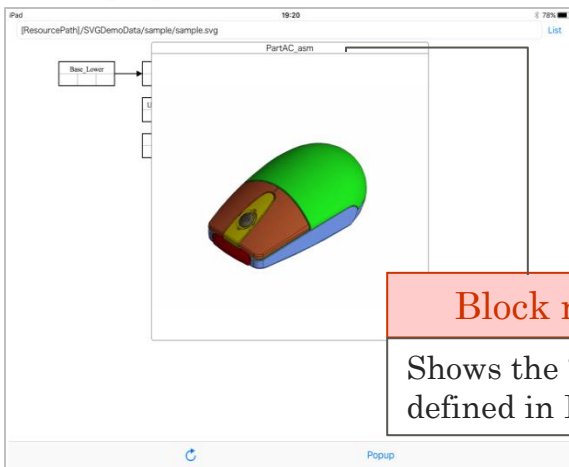
- “Delete History” or “Delete All History” execution does not delete either information saved in the unit via iTunes or standard sample information.

4-7. Switching display window format **FUJITSU**

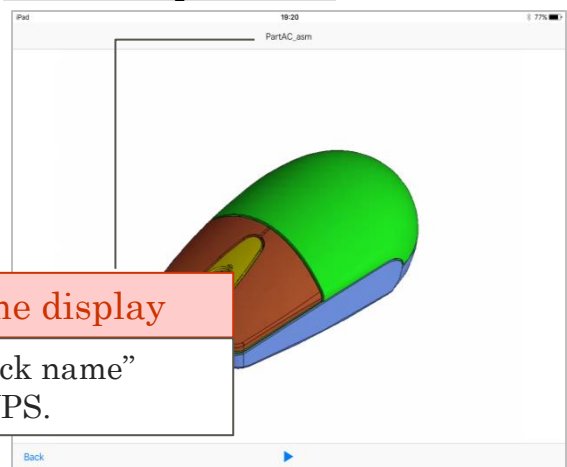
Switch the format of the static image, animation, and 3D model display window. Two formats, “Popup” and “Overlap” are the supported formats.

[Screen]

■ "Popup" format



■ "Overlap" format



Block name display

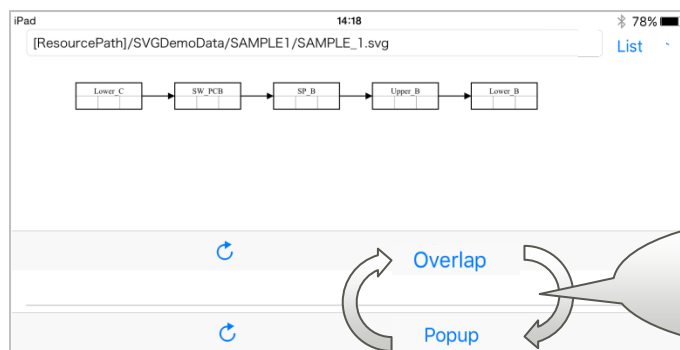
Shows the “block name”
defined in FJVPS.

[Pop-up in the Middle of the Screen]

[Full display in the screen]

[Specifications/Cautions]

- Tap “Popup” or “Overlap” in the upper right corner of the window to switch the display format. The window of the indicated format is opened.

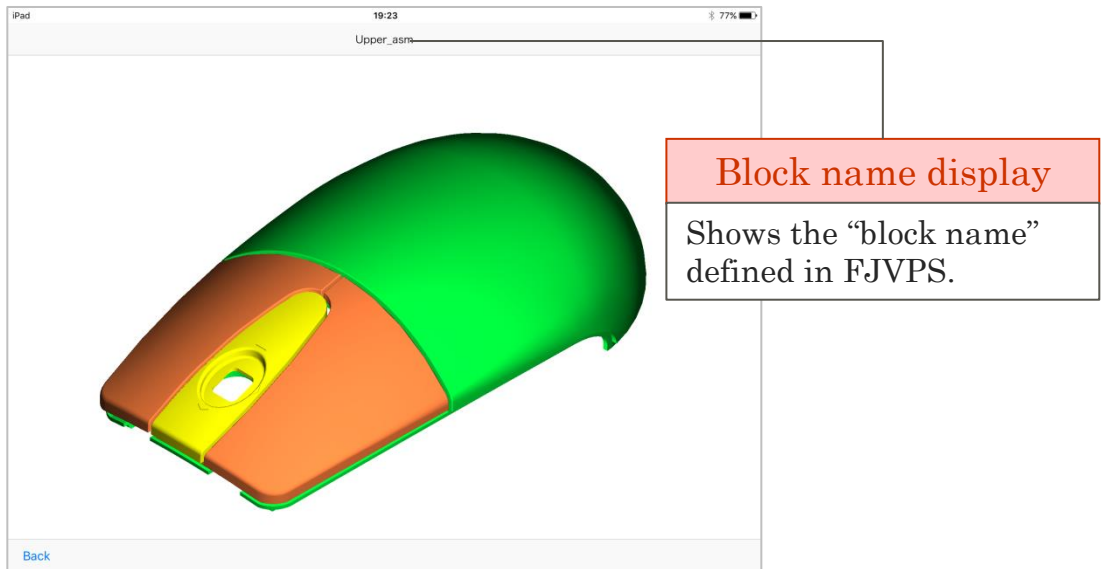


- Closing the window
 - A. POPUP: Tap an area outside the window frame.
 - B. OVERLAP“Overlap format”: Tap the part indicated as “Back” at the lower left corner of the window.

4-8. Static Image Viewing

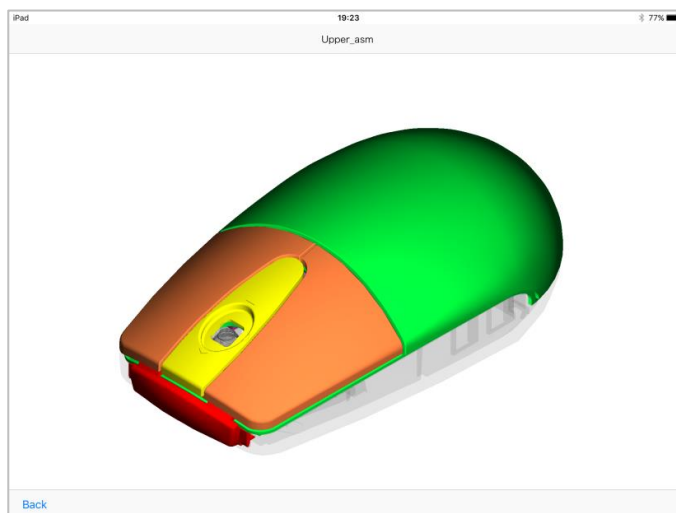
View the static image of a specified block model.
This view is independent of the model size and so
useful for verifying the assigned block part.

[Screen]



[Specifications/Cautions]

- The view is "FJVPS Standard View + Full display."
- The part assembled in the relevant phase is displayed in "Shading" mode and those already assembled before this phase are displayed in "Translucent" mode."



4-9. Animation Play

View the animation created in FJVPS in the video format. Use this feature to check the assembly procedure and assembling cautions dynamically.

[Screen]

Block name display

Shows the "block name" defined in FJVPS.

Rewind/Forward

Rewind or forward the animation.

Slider

Indicates the animation play position. Move this slider to play the animation from arbitrary time.

Play/Pause

Play/pause the animation. Every time this is tapped, the display is switched.

* Representation:

⏸ : Playing

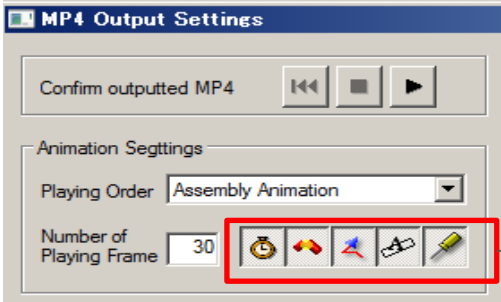
▶ : Before playing/paused

[Specifications/Cautions]

- The items displayed in the animation conform to the option settings in the “MP4 Output Settings.”
To create data for viewing, configure the option settings as usage, and then execute the “Output Data for iOS/Android” command.

[Displayable items]

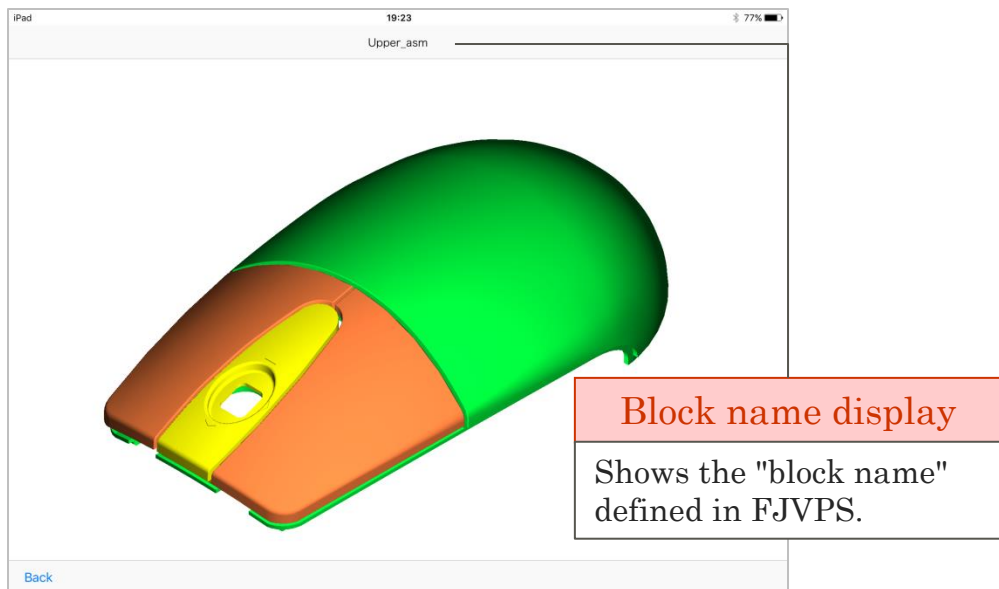
- Wait
- Collision Check
- Part trace
- Information displaying window
- Tool



4-10. 3D Data Viewing

View FJVPS 3D data. Use this feature to verify the detailed shapes of units and parts assembled in this block and assembly conditions statically.

[Screen]



Window controls

In this dialog box, view the model in various styles by using iOS-standard touch gestures.

[Window controls]

- Rotate : 1-finger swipe
- Zoom : Pinch-to-zoom
- Pan : 2-finger pan
- Full display : Double tap

[Specifications/Cautions]

- “FJVPS Standard View + Full display” is the initial view.
- The view mode is “shaded” only.

5. Settings Screen

5. Settings Screen

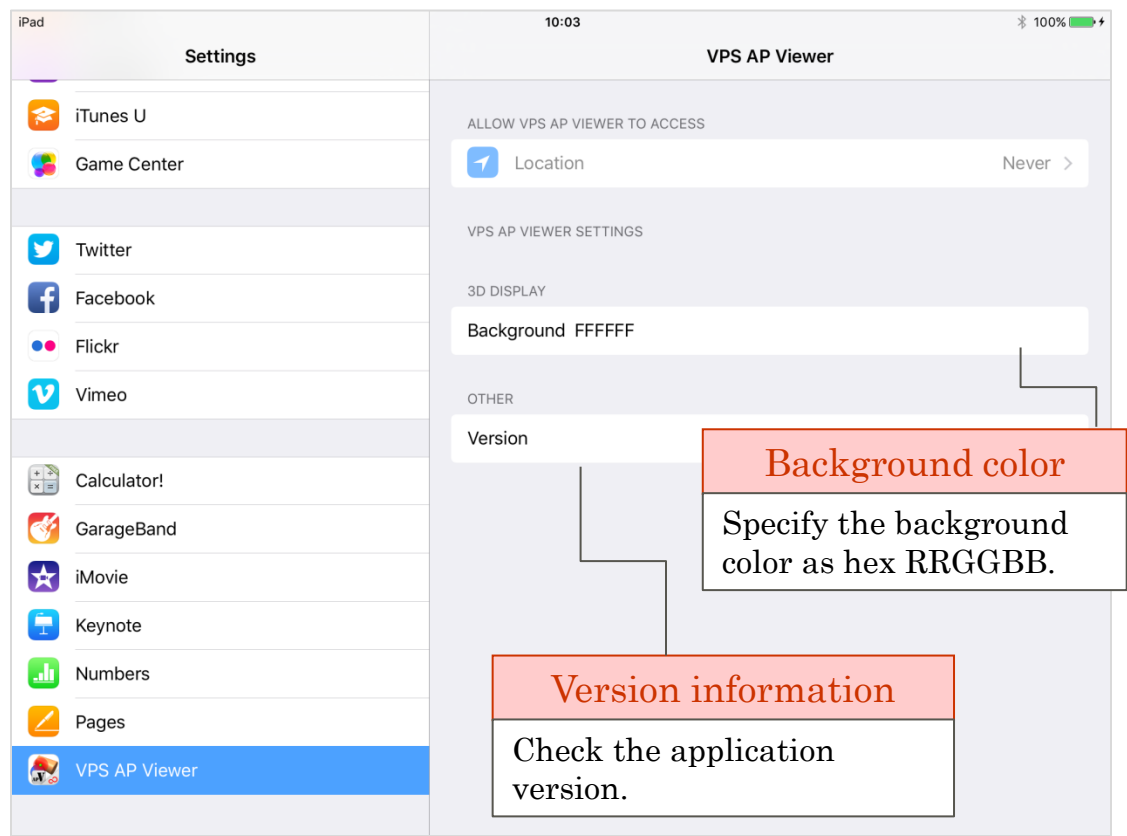
In the “settings screen,” edit the background color and check version information.

■ How To Check

- (1) Tap “Settings” on the desktop of the iPad/iPhone unit.



- (2) Select “VPS AP Viewer” from the application list.

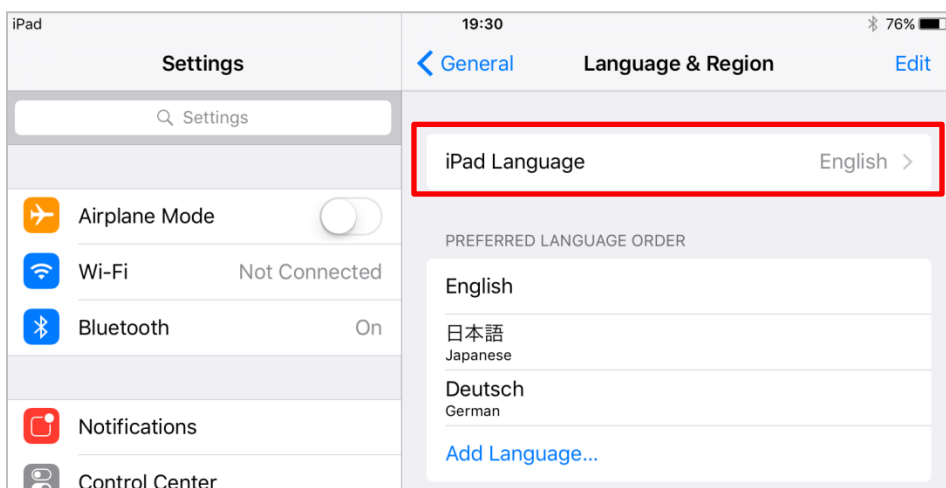


6. Display Language

6. Display Language

This application supports two languages, “Japanese” and “English.” “Japanese” is selected if “Japanese” is set under “Settings” - “General” - “Language & Region” - “iPad/iPhone Language,” or “English” is selected otherwise.

■ Used language determination

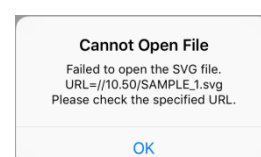
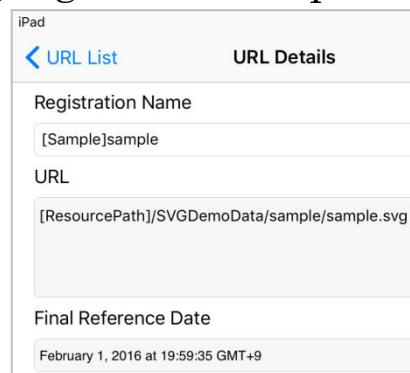


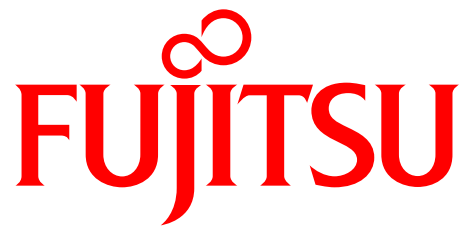
■ Menu display examples

[Language = Japanese]



[Language = Non-“Japanese”]





shaping tomorrow with you